

Geography
Higher level and standard level
Paper 2 – resources booklet

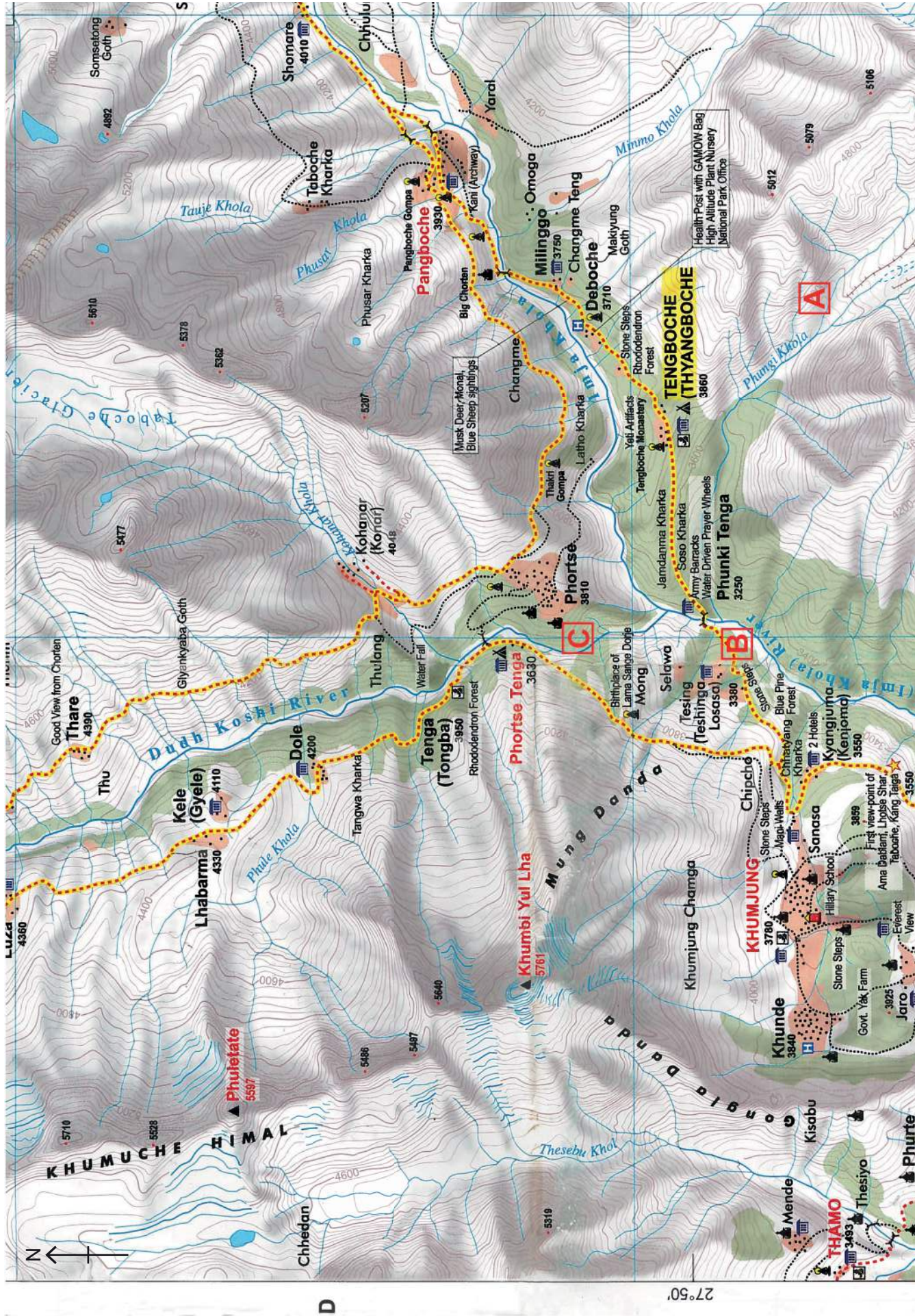
Wednesday 7 November 2018 (morning)

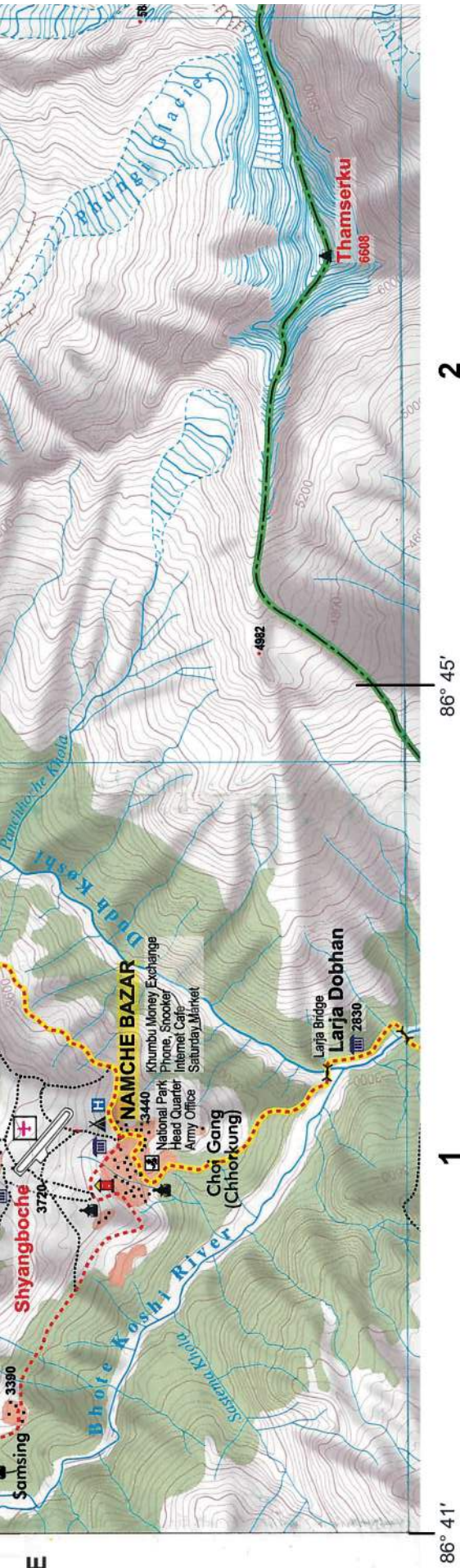
Instructions to candidates

- Do not open this resources booklet until instructed to do so.
- Use the resources as appropriate to the questions in paper 2.

Option A — Freshwater – issues and conflicts

- 2. The map extract shows part of the Sagarmatha National Park in Nepal. The scale is 1:50000 and the contour interval is 40 metres.





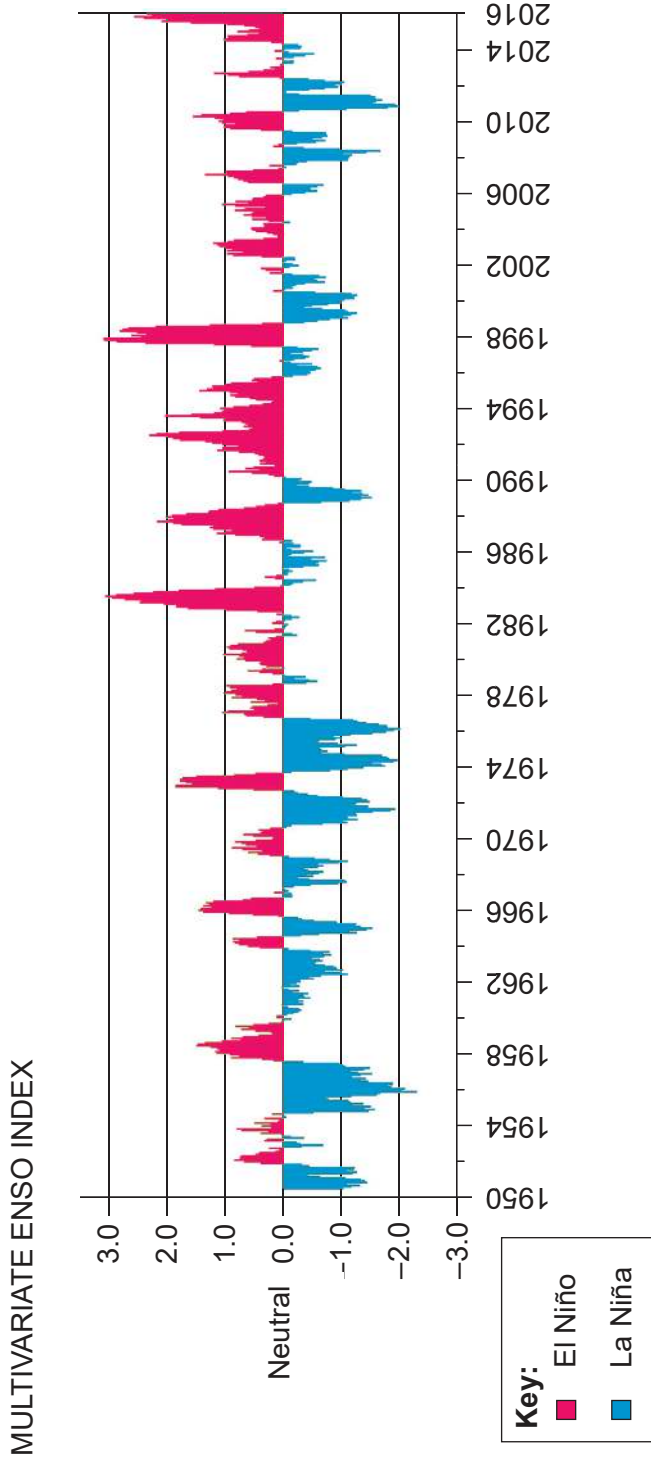
Key:

	International boundary		Height in metres
	National park boundary		Peak, Pass
	Climbing route		Settlement
	Main trekking route		Check point
	Minor route		Airport
	Post office		River, Bridge, Lake
	Temple, Monastery, Chorten		Cultivation, Forest
	Health post		Sand, Rock
	Hotel, Inn		Glacier
	Campsite		Contour lines

[Source: © National Geographic Maps, 2014]

Option B — Oceans and their coastal margins

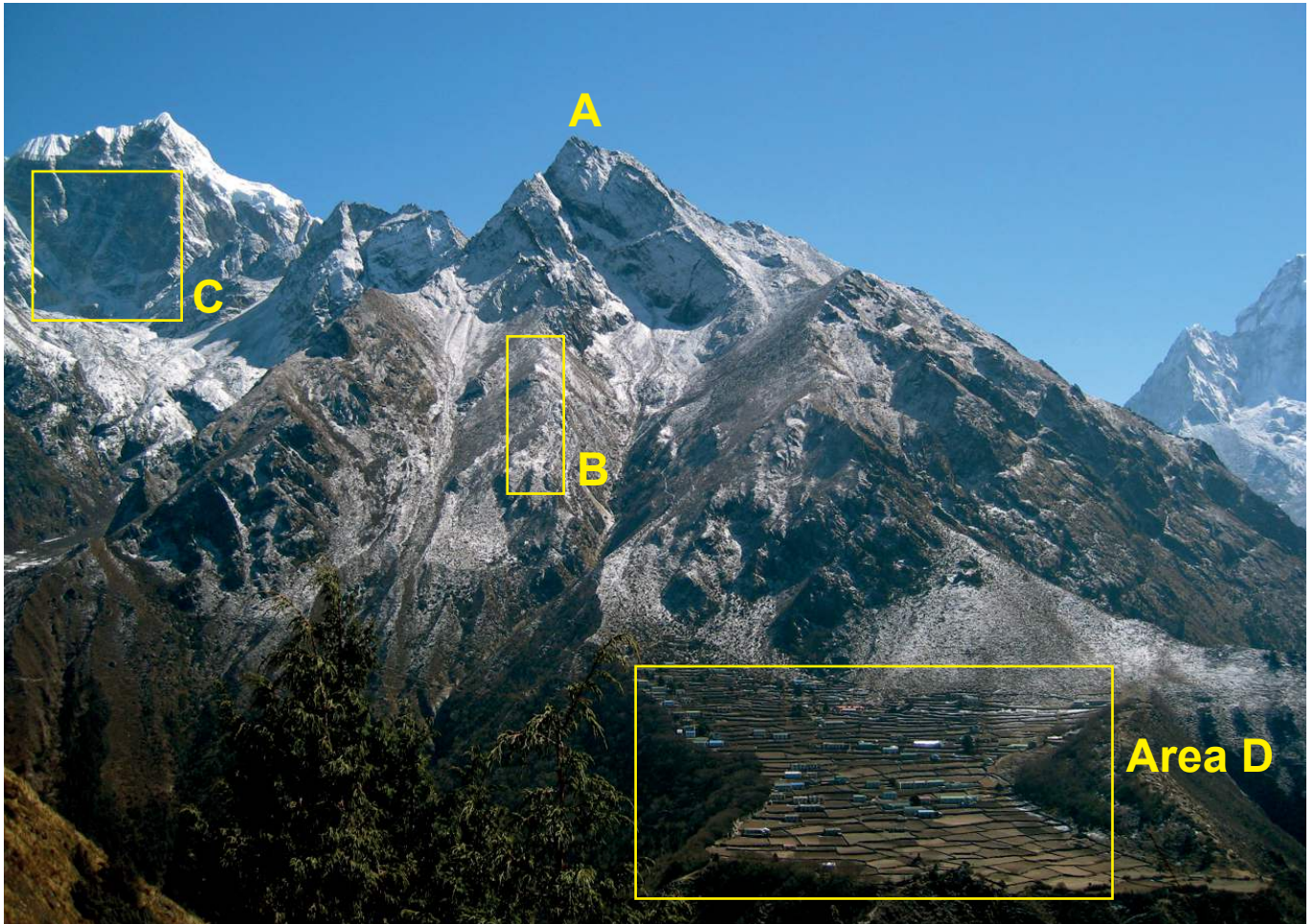
- The graph shows the relative strength of El Niño and La Niña events from 1950 to 2016.



[Source: Adapted from *Topics Geo – Natural catastrophes 2015: Analyses, assessments, positions*. 2016 issue © Copyright 2000–2018 Münchener Rückversicherungs-Gesellschaft Aktiengesellschaft in München (“Munich Re”). All rights reserved.]

Option C — Extreme environments

5. The photograph shows part of the Himalaya in the Everest region of Nepal in summer.



[Source: © International Baccalaureate Organization 2017]

Turn over

Option D — Hazards and disasters – risk assessment and response

7. The map shows the rainfall in Indian states for the 2014 monsoon season compared to the long-term average for the monsoon season.

Removed for copyright reasons

Option F — The geography of food and health

11. The map shows average daily calorie intake by country.

Removed for copyright reasons
